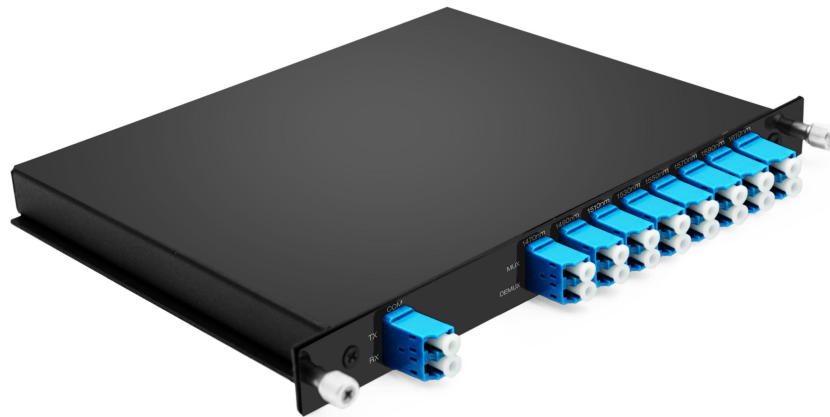


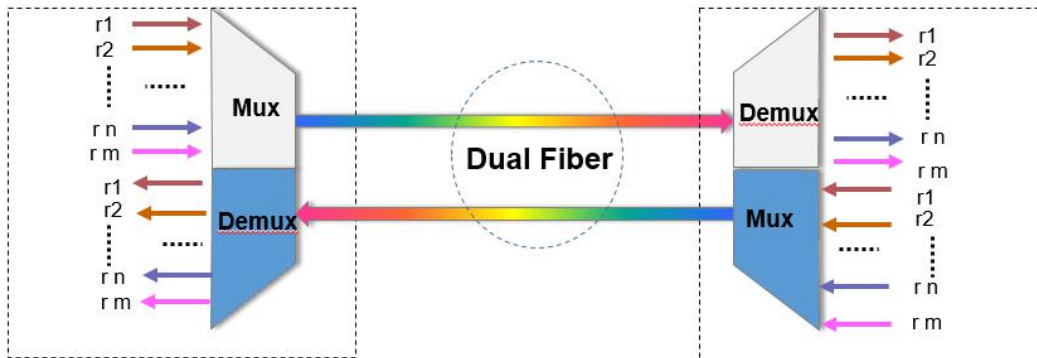
## CWDM DUAL FIBER MUX DEMUX

Passive CWDM Double Fiber Mux & Demux Module, LGX Box



### Product Features

- ❖ Low Insertion Loss
- ❖ High Isolation
- ❖ Low PDL
- ❖ Compact Design
- ❖ Good channel-to-channel uniformity
- ❖ Wide Operating Wavelength: 1270nm to 1620nm Dual fiber application
- ❖ Wide Operating Temperature: -40 to 85° C



## Applications

- ❖ CWDM System
- ❖ PON Networks
- ❖ CATV links

## Description

CWDM technology uses ITU standard 20nm spacing between the wavelengths, from 1270nm to 1620nm. Our CWDM module has 2 to 18 channels. The central wavelength of each channel is specified to one of the ITU-T grid wavelengths. The CWDM module features wide channel bandwidth (13nm). Its isolation is greater than 30dB for adjacent channels, and greater than 40dB for non-adjacent channels. The module also has high thermal stability to ensure reliable performance under different environment.

## Specification

Parameters		4CH	8CH
Center Wavelength (nm)		ITU, ITU+1	
Passband (nm)		ITU±6.5	
Operating Wavelength (nm)		1270-1610nm	
Channel Space (nm)		20	
Fiber Type		SMF-28e or customer specified	
IL (dB)		1.2	2.4
Isolation (dB)	Adjacent Channel	30	
	Non-Adjacent Channel	40	
PDL (dB)		0.2	
PMD (ps)		0.1	
RL (dB)		45	
Directivity (dB)		50	
Maximum Optical Power (mw)		500	
Operating Temperature (°C)		-20~70	
Storage Temperature (°C)		-40~85	
19" Rack Mount Package		LGX Box	

## Ordering Information

Part Number	Product Description
FM-1U19-4	FM 4-Slot 1U 19" Rack Chassis Unloaded, Holds up to 4 Units LGX BOX
FM-CWMD4-4753	Passive CWDM Double Fiber Mux & Demux Module 4 CH (1470-1530nm) LC/UPC LGX BOX
FM-CWMD4-4753+31	Passive CWDM Double Fiber Mux & Demux Module 4 CH (1470-1530nm) & Additional 1310 Window LC/UPC LGX BOX
FM-CWMD4-4753+55	Passive CWDM Double Fiber Mux & Demux Module 4 CH (1470-1530nm) & Additional 1550 Window LC/UPC LGX BOX
FM-CWMD4-XXXX	Passive CWDM Double Fiber Mux & Demux Module 4 CH (XX-XXnm Customer Specified) LC/UPC LGX BOX
FM-CWMD4-XXXX+31	Passive CWDM Double Fiber Mux & Demux Module 4 CH (XX-XXnm Customer Specified) & Additional 1310 Window LC/UPC LGX BOX
FM-CWMD4-XXXX+55	Passive CWDM Double Fiber Mux & Demux Module 4 CH (XX-XXnm Customer Specified) & Additional 1550 Window LC/UPC LGX BOX
FM-CWMD8-4761	Passive CWDM Double Fiber Mux & Demux Module 8CH (1470-1610nm) LC/UPC LGX BOX
FM-CWMD8-4761+31	Passive CWDM Double Fiber Mux & Demux Module 8CH (1470-1610nm) & Additional 1310 Window LC/UPC LGX BOX
FM-CWMD8-XXXX	Passive CWDM Double Fiber Mux & Demux Module 8CH (XX-XXnm Customer Specified) LC/UPC LGX BOX
FM-CWMD8-XXXX+31	Passive CWDM Double Fiber Mux & Demux Module 8CH (XX-XXnm Customer Specified) & Additional 1310 Window LC/UPC LGX BOX